

LGA STUDY BRIEF

PROTECTED AREAS AND THE GRANDE ALLIANCE STUDY

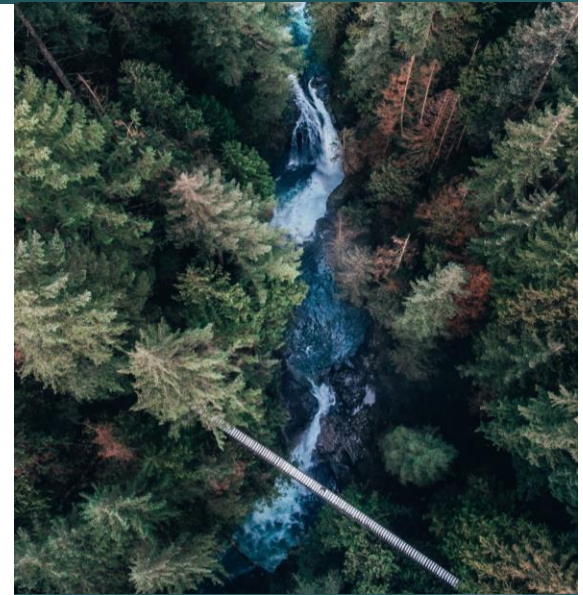
Part of the collaborative efforts of the Cree Nation Government and the Quebec Government under the Grande Alliance is for design and implementation of Protected Areas (PA) and transportation, communications and energy infrastructure. The goal is to achieve balance between cultural and natural preservation and development promised under the James Bay Northern Quebec Agreement.

The LGA Memorandum of Understanding (MOU) signed in 2020 includes the PA. The purpose for having the PA under the same MOU as the LGA is to ensure that the transportation infrastructure studies under the LGA adhere to the Cree Regional Conservation Strategy that the Cree Nation Government has been working on since 2015. To align the PA within the studies, both consulting firms for the LGA studies (Phase 1, 2 & 3) have been presented with the plans for PA.

For phase 2 & 3, there is an ongoing effort to use the study as a process for creating an informed population. The collaboration between the PA team and the CDC helps ensure that consultations with tallymen and land users are comprehensive and all-inclusive.

For more information on PA, you can visit the following websites:

- <https://www.eeyouconservation.com/protected-areas-process/>
- <https://www.cngov.ca/environment/protected-areas/>



COMMUNITY INFORMATION OFFICERS

WASWANIFI

Cheyenne Gull
grande.alliance@cfnw.ca

OIJÉ-BOUGOUMOU

Sydney Coonishish
gacio@ouje.ca

WASHA SIBI

Adrianna Trapper
gacio@washawsibi.ca

MISTISSINI

Errol Mianscum
emianscum@outlook.com

NEMASKA

Bradley Mianscum
gacio@nemasca.ca

WASKAGANISH

Raymond Blackned
gacio@waskaganish.ca

EASTMAIN

CIO TBD
info@lagrandealliance.quebec

WEMINDJI

Geraldine Mark (interim)
gmark@wemindji.ca

CHISASIBI

Christopher Herodier
chritopherherodier@chisasibi.ca

WHAP MAGOOSTUI

John Shem
johnshem@whapmagoostuifn.ca

Two firms have been hired by the CDC to conduct the studies for the LGA. Each firm has an Eeyou Liaison Officer:

1

PHASE 1 - FEASIBILITY STUDY

Vision Eeyou Istchee Consortium (Stantec, Desfor, Systra)

Liaison Officer: Ian Diamond

Email: ianrdiamond@gmail.com

2 3

PHASES 2 & 3 - PRE-FEASIBILITY STUDY

WSP, Maamuu Consultants, Mishtuk Corporation & EnviroCree

Liaison Officer: Irene Neeposh

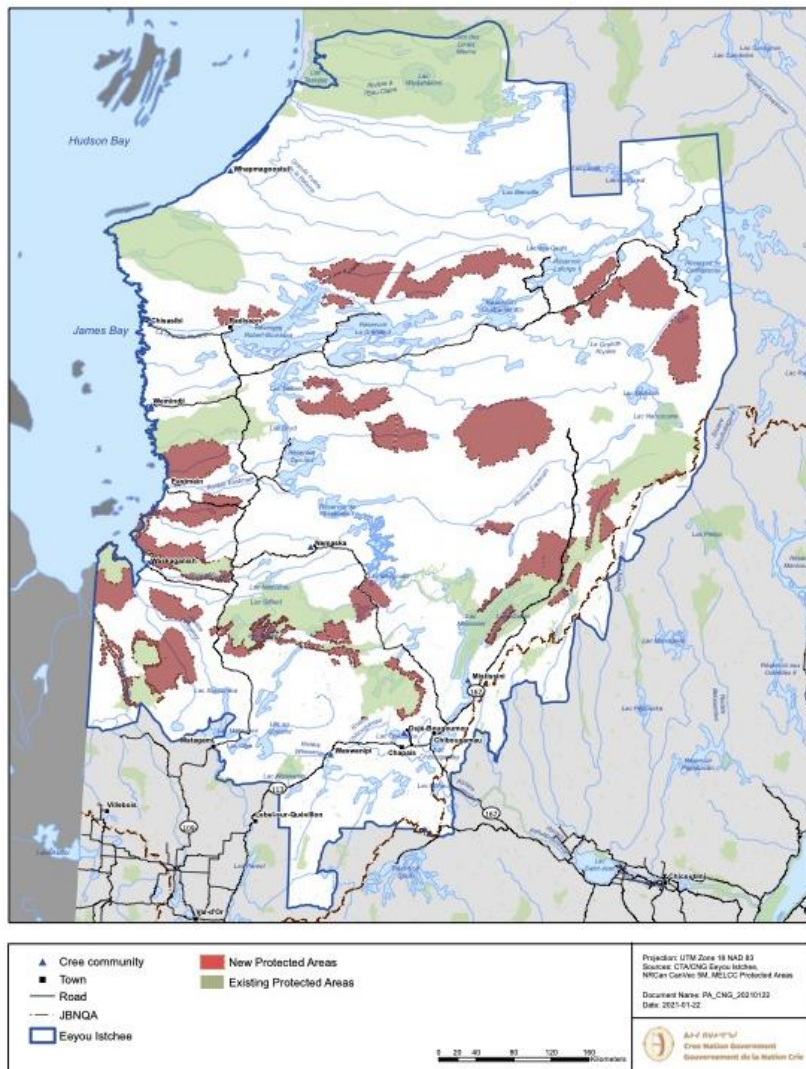
Email: irene@maamuu.ca

LGA STUDY BRIEF

PROTECTED AREAS INCLUDED IN LGA

The Cree Nation Government has been working on the protected areas since 2015. This work began with the creation of a Cree Regional Conservation Strategy, followed by the Community Engagement of collecting cultural information and defining protected area proposal boundaries. In 2019, the community proposals were updated, and negotiations took place under the LGA.

Advancement of the PA network and other conservation initiatives will continue to progress and will continue the process of community engagement, knowledge acquisition, finalization of PA boundaries. From this, an environmental and social impact assessment process for the new PA network will proceed, and conservation and management plans will be drafted.



- The LGA Study Briefs are periodical publications that highlight key findings and present key questions that can provide Eeyou perspective to the pre-feasibility study for the LGA.



CREE NATION
GOVERNMENT

Québec

CREE
DEVELOPMENT
CORPORATION

LA GRANDE
ALLIANCE
ᓄᓐᓄᓐ ᓄᓐᓄᓐ